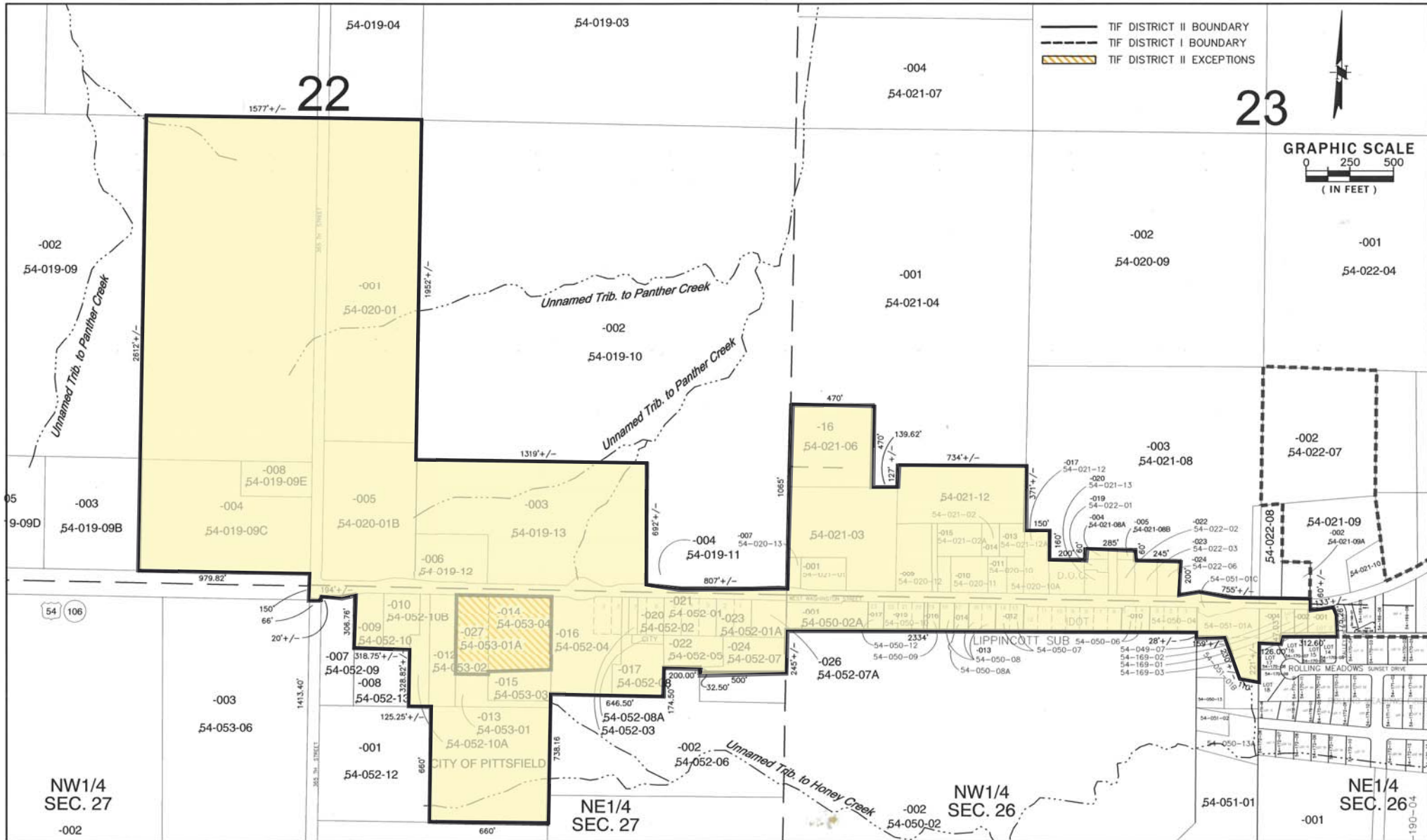


Copyright © City of Pittsfield, 2025. All Rights Reserved. This map is for informational purposes only. It is not intended to be used for any other purpose. The City of Pittsfield is not responsible for any errors or omissions on this map.



NO.	DATE	REVISION DESCRIPTION	BY

**MECO ENGINEERING COMPANY, INC.**  
 CIVIL - STRUCTURAL - ELECTRICAL - MECHANICAL ENGINEERS  
 116 South Madison P.O. Box 106, PITTSFIELD, IL 62363  
 Voice 217-295-2950 Fax 217-295-6500  
 www.mecoengineering.com  
 E. Design Firm # 184-001749

FOUR POINTS LAND SURVEYING, INC.  
 4950 COUNTY ROAD 403  
 PALMYRA, MO. 63461  
 573-406-5533  
 ILLINOIS PROFESSIONAL DESIGN FIRM  
 #184-006044

CITY OF PITTSFIELD  
 215 NORTH MONROE  
 PIKE COUNTY, ILLINOIS

SURVEYED	DESIGNED M. WOODGROFF	DRAWN J. STEWART G. MOORE	CHECKED	APPROVED	RELEASED
----------	--------------------------	---------------------------------	---------	----------	----------

CITY OF PITTSFIELD  
 TAX INCREMENT FINANCE DISTRICT II

SCALE 1"=500'	DRAWING NAME TIF MAP	PROJECT NUMBER 410-035.002	SHEET NO. 1 OF 1
------------------	-------------------------	-------------------------------	---------------------