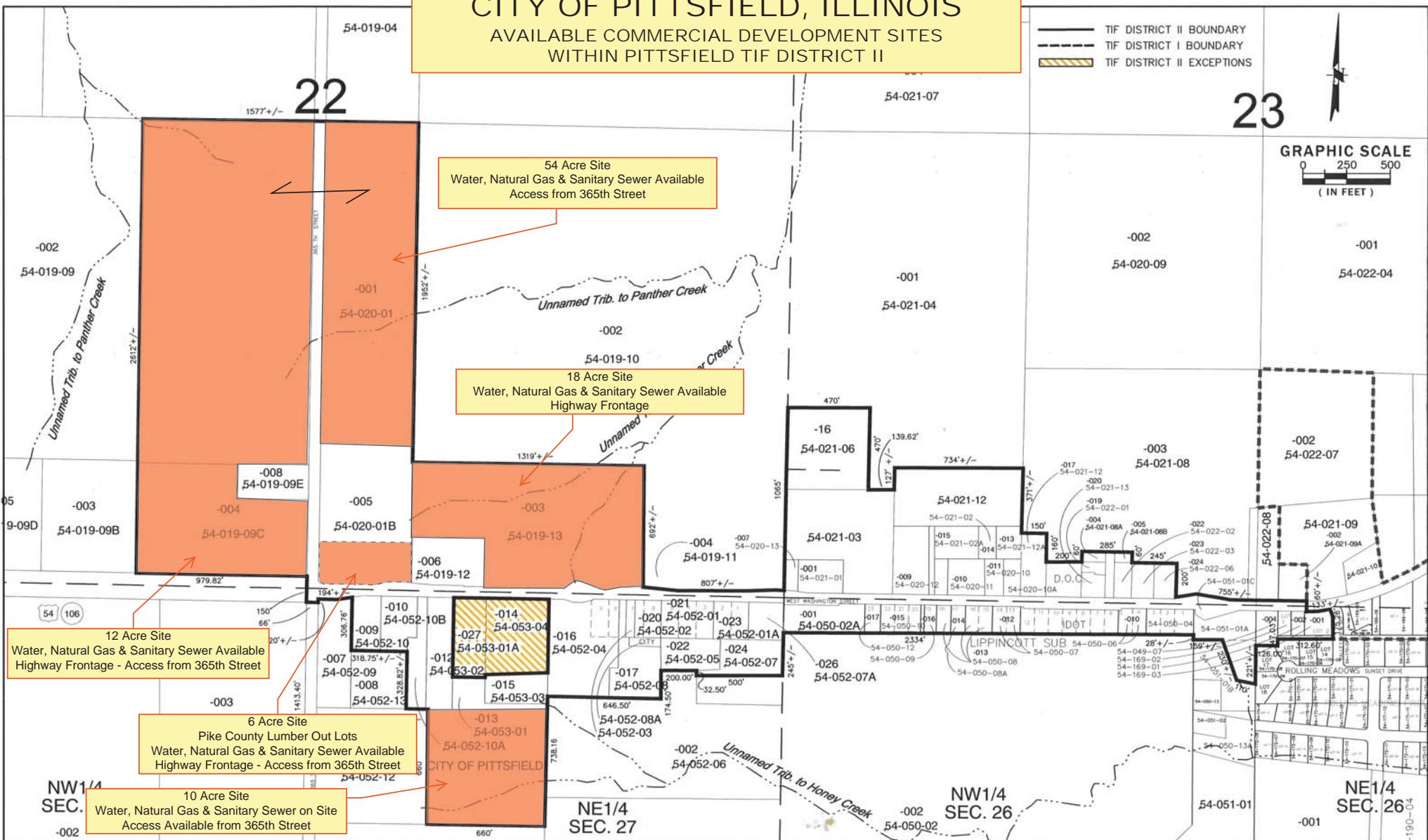
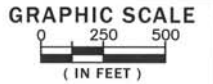


CITY OF PITTSFIELD, ILLINOIS

AVAILABLE COMMERCIAL DEVELOPMENT SITES
WITHIN PITTSFIELD TIF DISTRICT II

-  TIF DISTRICT II BOUNDARY
-  TIF DISTRICT I BOUNDARY
-  TIF DISTRICT II EXCEPTIONS

23



12 Acre Site
Water, Natural Gas & Sanitary Sewer Available
Highway Frontage - Access from 365th Street

6 Acre Site
Pike County Lumber Out Lots
Water, Natural Gas & Sanitary Sewer Available
Highway Frontage - Access from 365th Street

10 Acre Site
Water, Natural Gas & Sanitary Sewer on Site
Access Available from 365th Street

54 Acre Site
Water, Natural Gas & Sanitary Sewer Available
Access from 365th Street

18 Acre Site
Water, Natural Gas & Sanitary Sewer Available
Highway Frontage

NO.	DATE	REVISION DESCRIPTION	BY

MECO ENGINEERING COMPANY, INC.
CIVIL - STRUCTURAL - ELECTRICAL - MECHANICAL ENGINEERS
116 South Madison P.O. Box 106, PITTSFIELD, IL 62363
Voice 217-285-2500 Fax 217-285-0500
www.mecoenr.com
E. Design Firm # 184-001749

FOUR POINTS LAND SURVEYING, INC.
4990 COUNTY ROAD #03
PALMYRA, MO. 63461
573-406-5533
ILLINOIS PROFESSIONAL DESIGN FIRM
#184-006044

CITY OF PITTSFIELD
215 NORTH MONROE
PIKE COUNTY, ILLINOIS

DESIGNED	DESIGNED	DRAWN	CHECKED	APPROVED	RELEASED
H. MCKENDRICK	H. MCKENDRICK	J. STEWART	G. MOORE		

CITY OF PITTSFIELD
TAX INCREMENT FINANCE DISTRICT II

SCALE	DRAWING NAME	PROJECT NUMBER	SHEET NO.
1"=300'	TIF MAP	810-035.002	1 OF 1